

APPENDIX 2 :

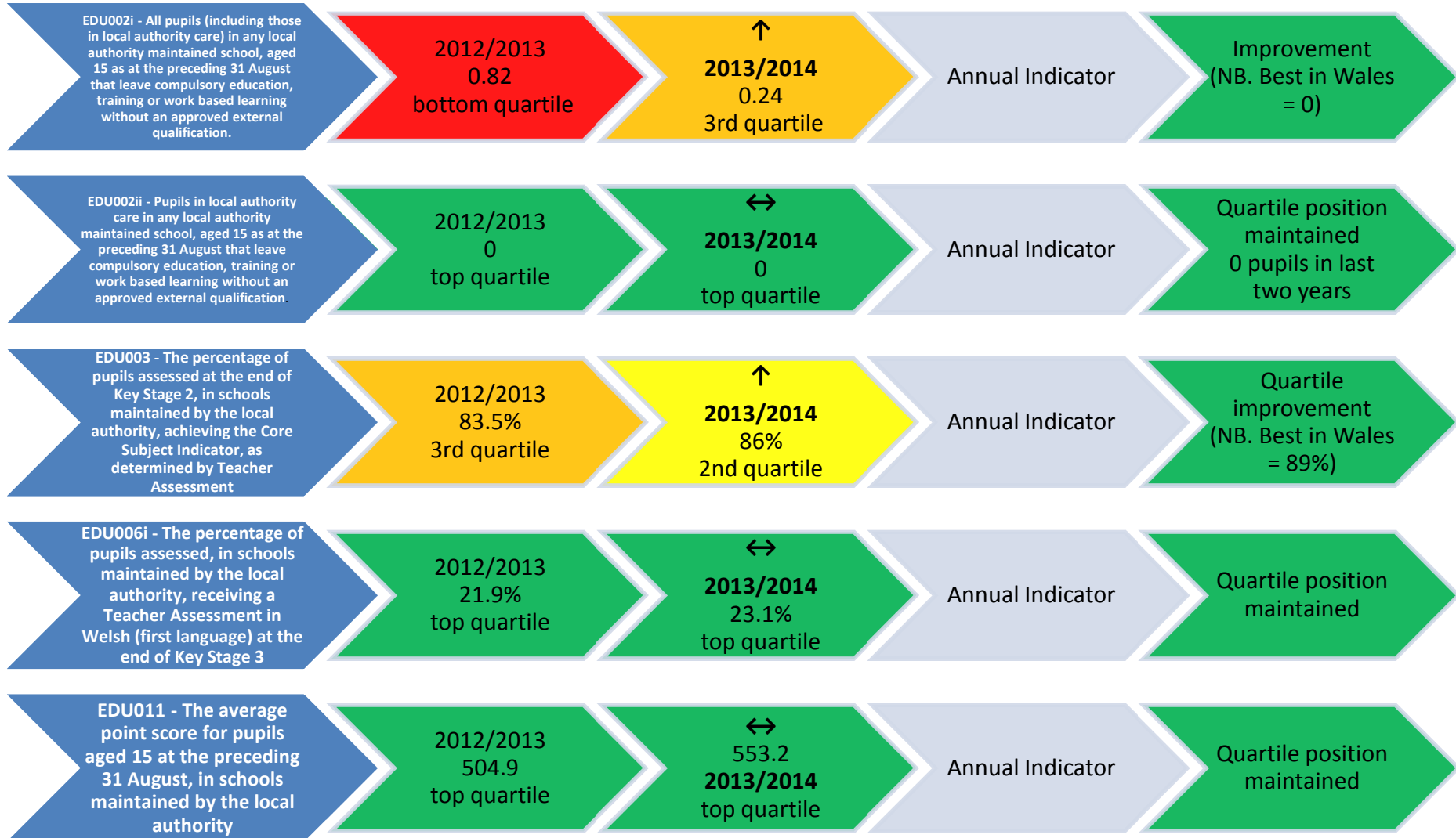
NATIONAL STRATEGIC INDICATORS (NSI) PERFORMANCE 2012/2013 – 2014/2015

KEY

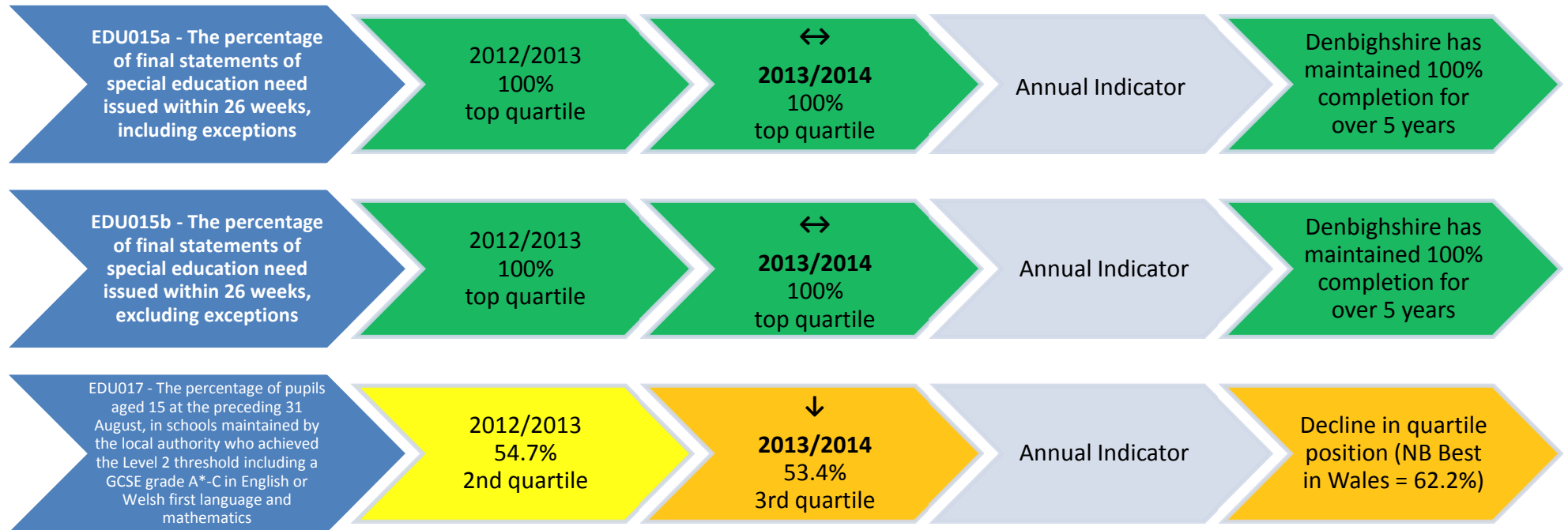
DIRECTION OF TRAVEL



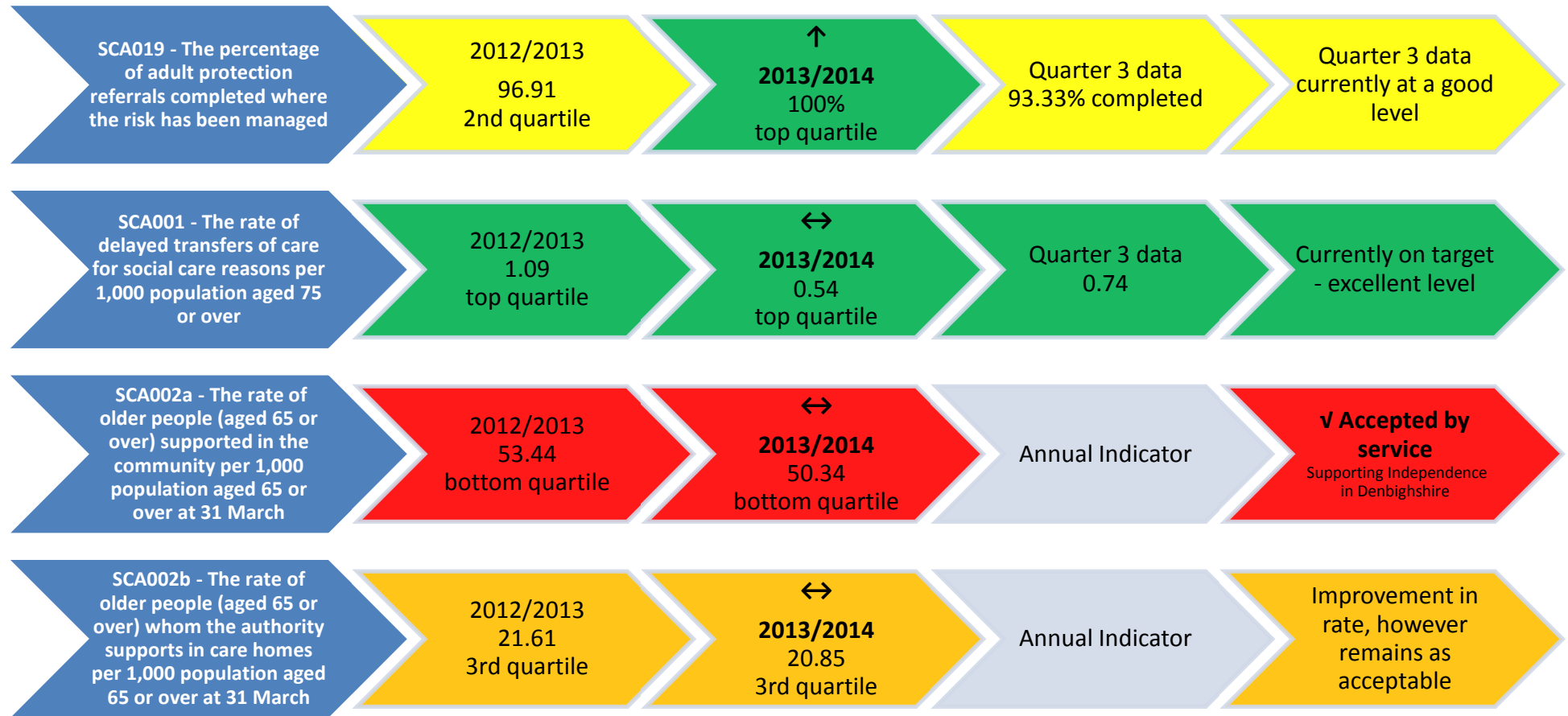
EDUCATION



EDUCATION

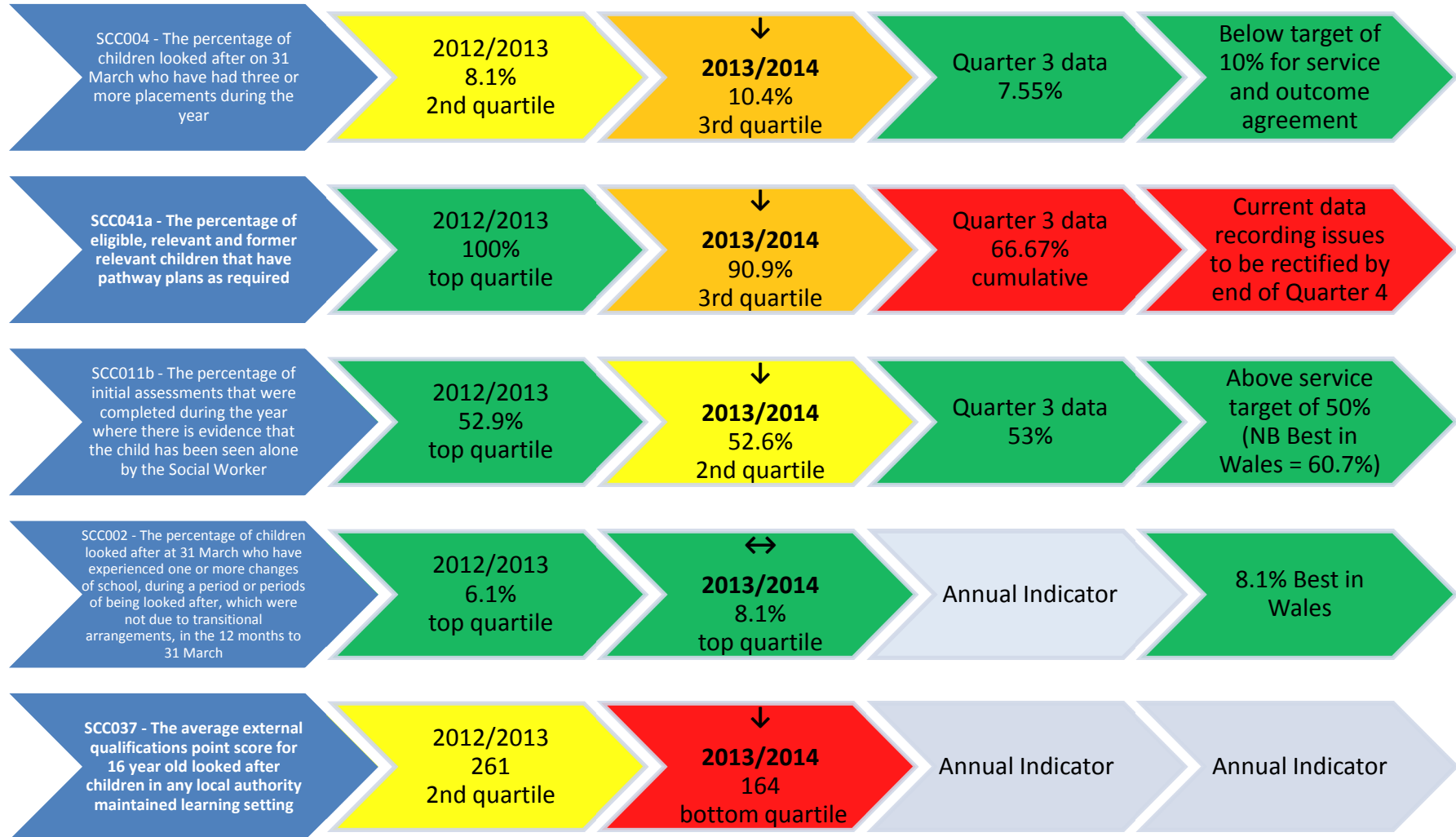


SOCIAL SERVICES - ADULTS

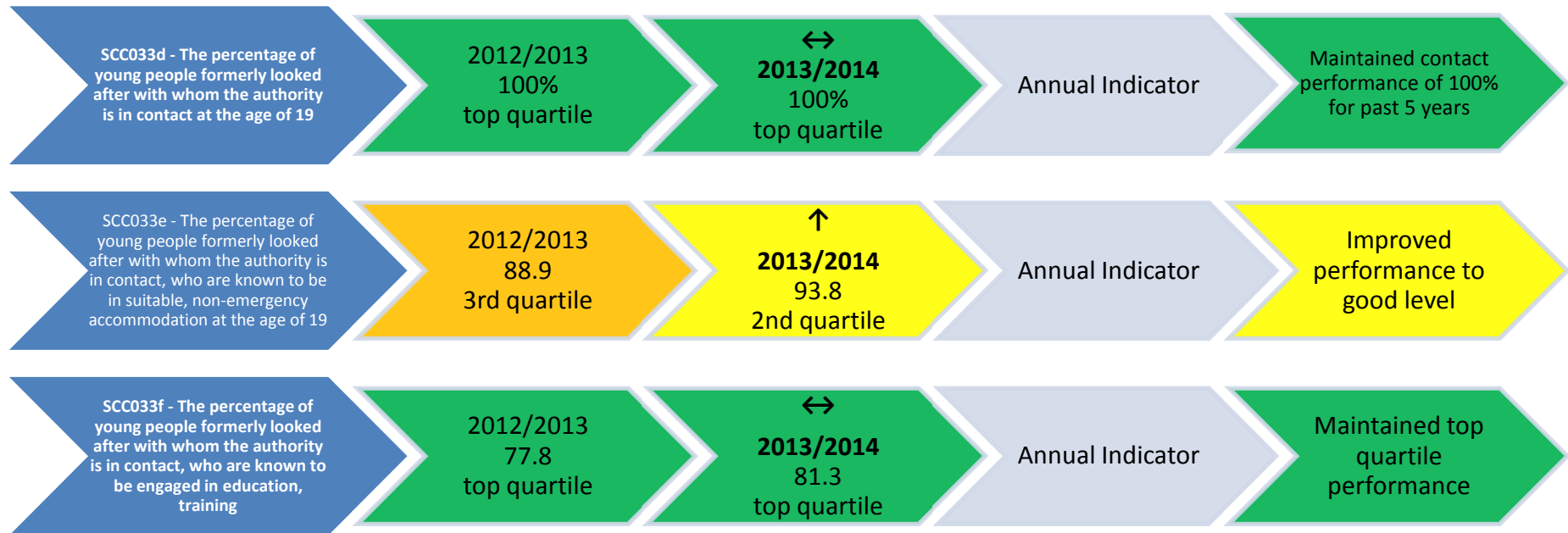


NB. SCA/002a does not take into account Denbighshire's ambition to meet people's need through reablement and community services rather than managed care. Good performance should be low in this indicator. In that case, Denbighshire's performance for 2013/14 has improved and is in the upper quartile.

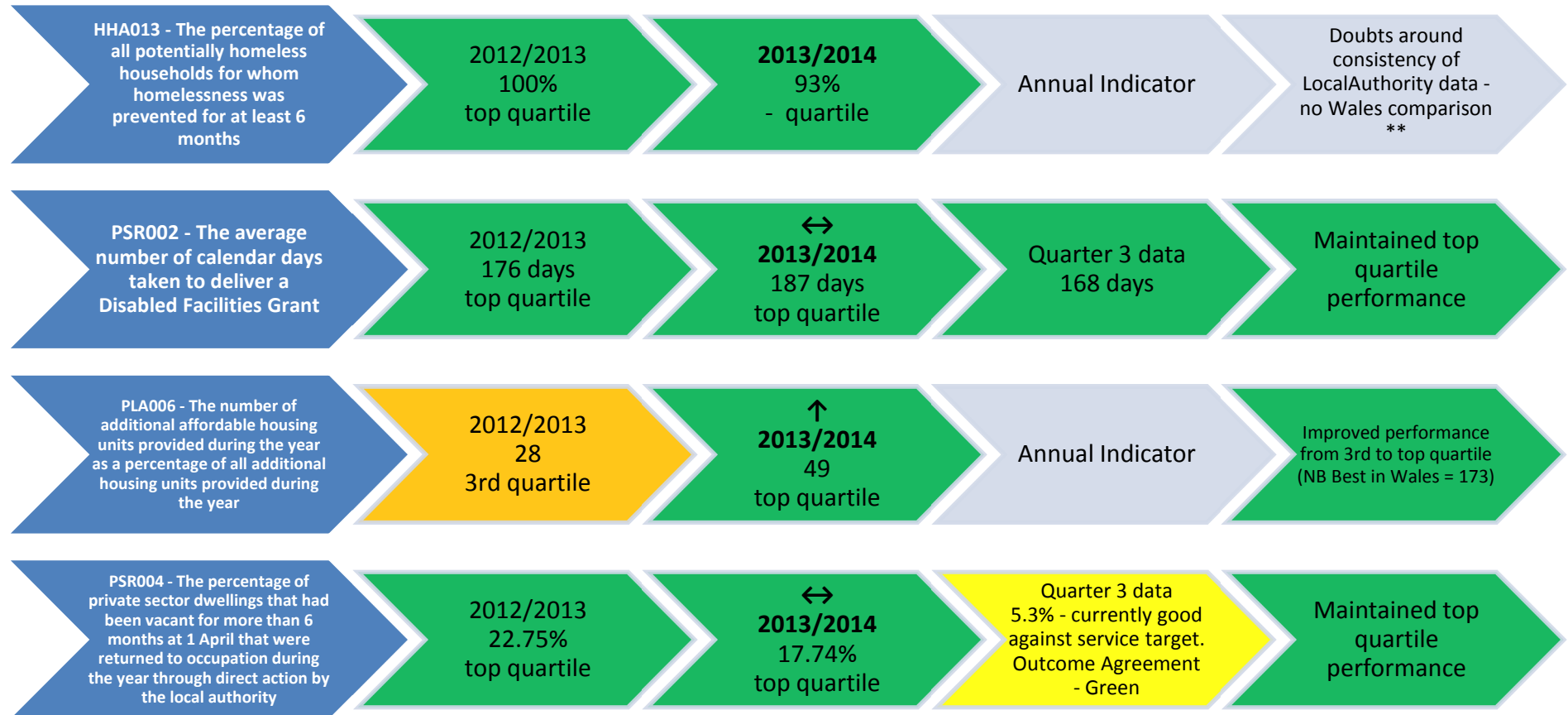
SOCIAL SERVICES - CHILDREN



SOCIAL SERVICES - CHILDREN

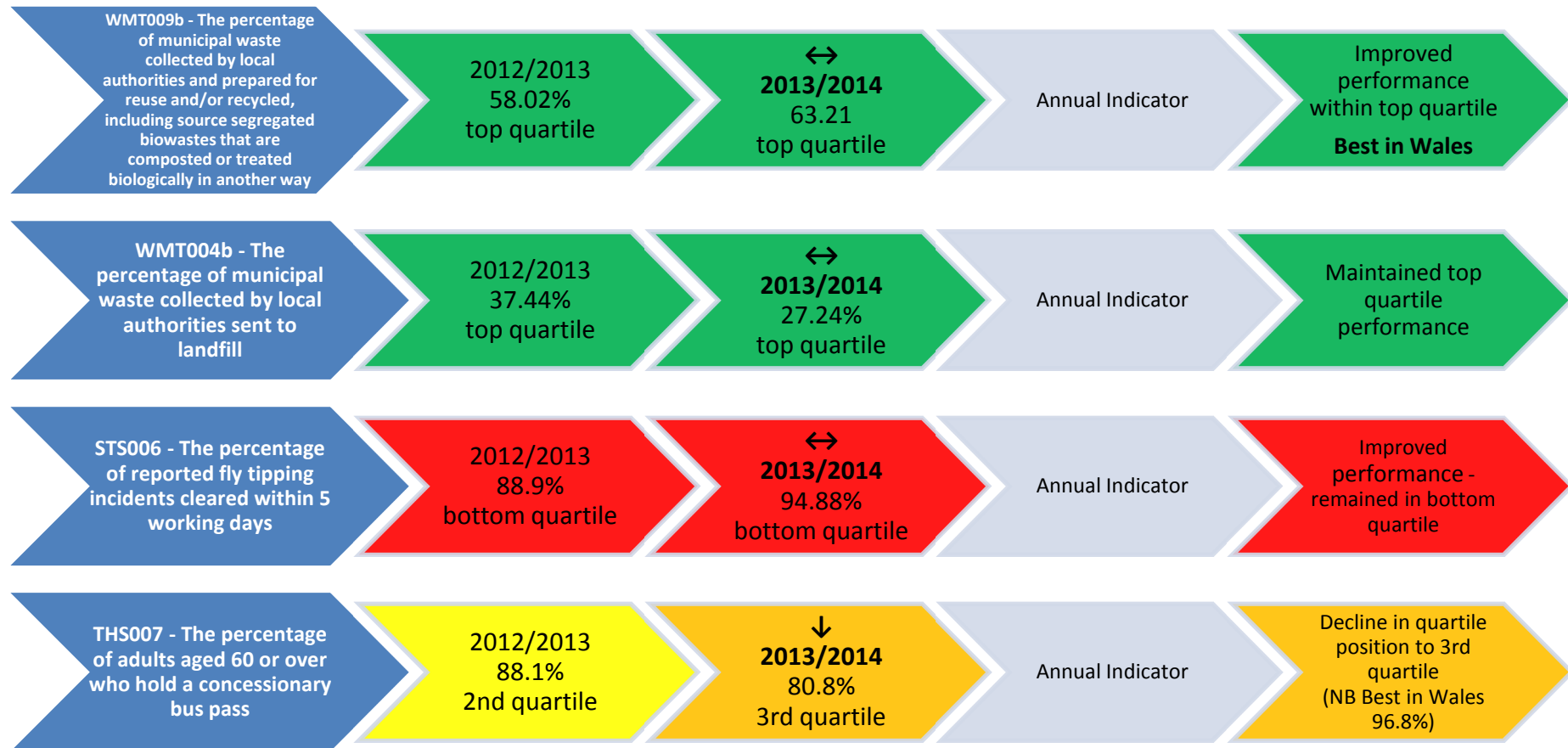


HOMELESSNESS, PRIVATE SECTOR RENEWAL AND PLANNING



** HHA/013 will need to be collected for 2014-15, however, it will not be collected centrally by Welsh Government for 2015-16. In respect of the 2014-15 data for HHA/013, it will again be noted that the data should not be compared across authorities due to inconsistencies in the way that local authorities record this indicator when it is published. New homelessness data collection is currently being developed by the Welsh Government to align with new legislation and data from this collection will be the focus for monitoring homelessness performance from April 2015 onwards.

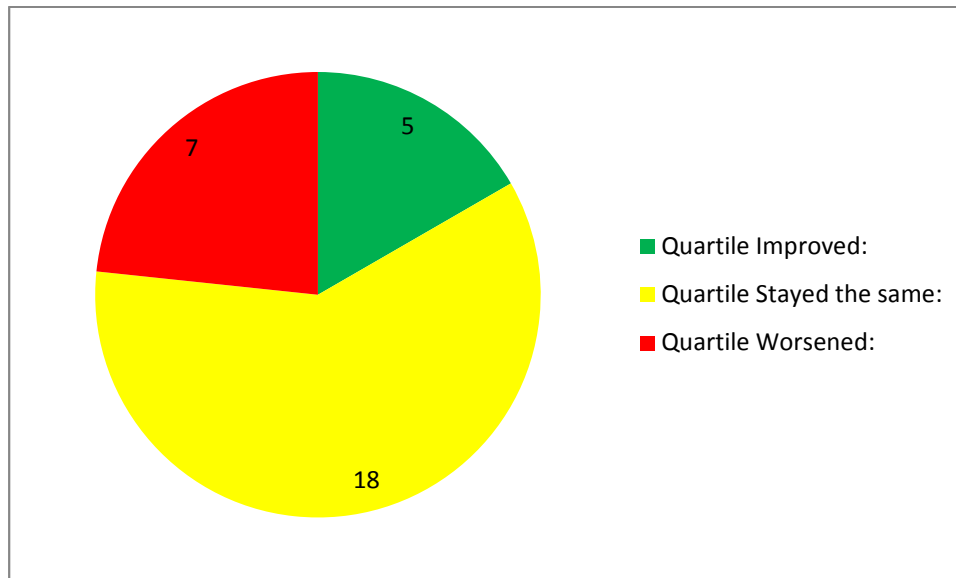
WASTE MANAGEMENT, FLY TIPPING, TRANSPORT



LEISURE & LIBRARIES



SUMMARY OF NSI QUARTILE POSITIONS - 2012/2013 – 2013/2014 COMPARISON



2013/2014 Denbighshire's performance in these statutory indicators = excellent
16 in the top quartile (which is more than any other council in Wales).